



Performance Training in Football Refereeing Weekly Training Plan

WEEK 47 from Monday 16th to Sunday 22nd of November Macrocycle V, week 1 (Training week 25)

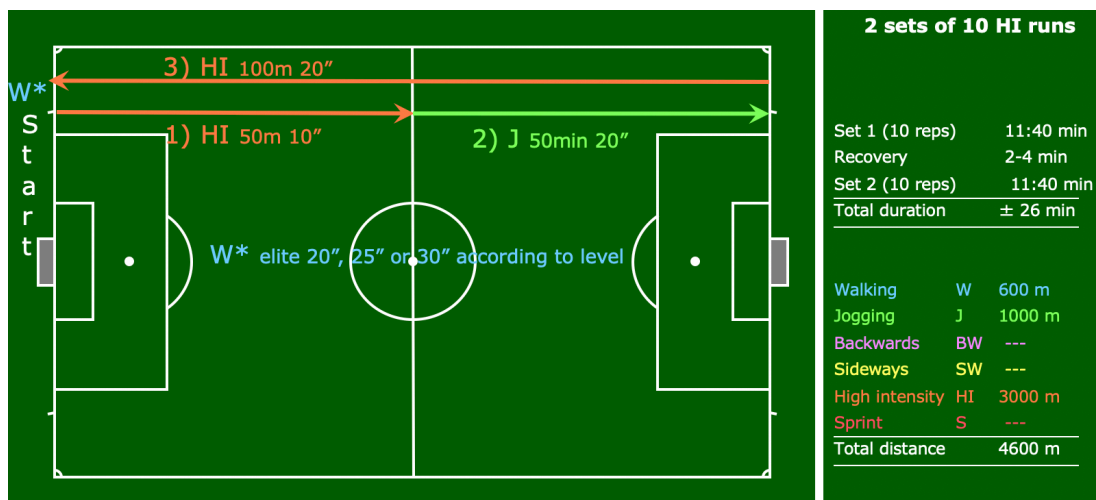
- Mon. 16th: * Act. Rec. - 30' non-weight-bearing ex. (Cycle / Swim / X-Train) at 65-70% HR_{max}
Tr. 94 - 20' extensive stretching
- Sauna, Jacuzzi, Massage
- Tue. 17th: * Low Int. - 5' jogging slowly building up to 70% HR_{max} (\pm 1 km).
Tr. 95
- * Warm up - 20' jogging, mobilisation and dynamic stretching.
- * Strength - 15' core stability & injury prevention exercises.
- * Speed End. - Run for 10m at 90% max speed, walk to the end (40m)
- Turn and run 20m at 90% SPmax, walk to the end (30m)
- Turn and run 30m at 90% SPmax, walk to the end (20m)
- Turn and run 40m at 90% SPmax, walk to the end (10m)
- Turn and run 50m at 90% SPmax, turn and run another 50m (100m)
- Your heart rate should peak at >90% HR_{max} at the end of each rep
- Rest for 90" then repeat 5 x. Total time is 15'.
- 4' passive recovery (until bpm < 65% HR_{max})



- * High Int. - Set 1: Run from goal line to midline at high intensity in 10". Then, jog to the opposite goal line in 20". Continue from goal line to the opposite goal line in 20". Recovery time of 20", 25", 30" recovery according to fitness level. 10 reps.
- 2-4' recovery according to fitness level.
- Set 2: Again 10 reps.



Performance Training in Football Refereeing Weekly Training Plan



* High Int.

- For Assistant Referees, a Yo-Yo based-exercise is scheduled:

- Set 1: 10 x 100 m shuttles (50 m - turn L - 50 m) in 20"

- 30" recovery walk (40 m)



- This first set takes 8'20".

- 3' recovery

- Set 2: 10 x 100 m shuttles (50 m - turn R - 50 m) in 20"

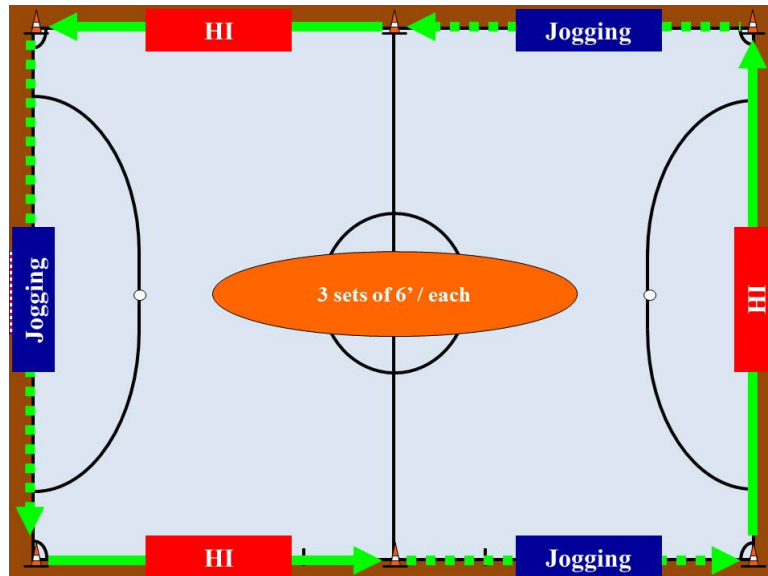
- 30" recovery walk (40 m)

- All together, this exercise takes 20'40 (8'20" + 3' recovery + 8'20")

- The total distance equals 2800 m, of which 2000 m at high speed and 800 m walking.

* High Int.

- Futsal Referees could consider the following exercise:



* Cool down - 5' jogging and walking, followed by 10' static stretching.

Total duration: 81'

Wed. 18th: * Strength - 10' warm up on the bike / x-trainer / rower (70% HR_{max})
- individualised upper and lower body strength exercises

Thu. 19th: * Low Int. - 5' jogging slowly building up to 70% HR_{max} (± 1 km).
Tr. 96

* Warm up - 20' jogging, mobilisation and dynamic stretching.

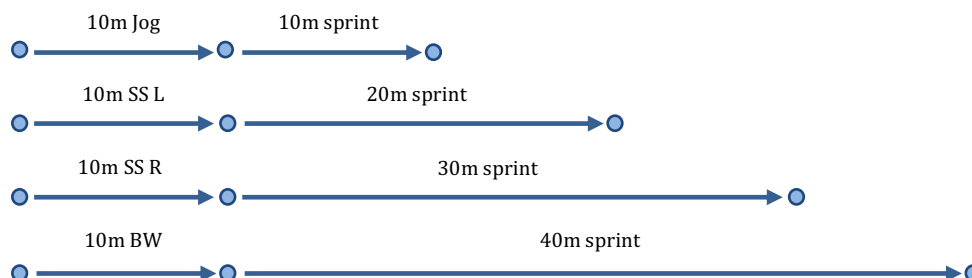
* Strength - 15' core stability & injury prevention exercises.

* Speed & Agility - Set out cones as shown below and perform the following sprints at maximum speed X 4 rotations:

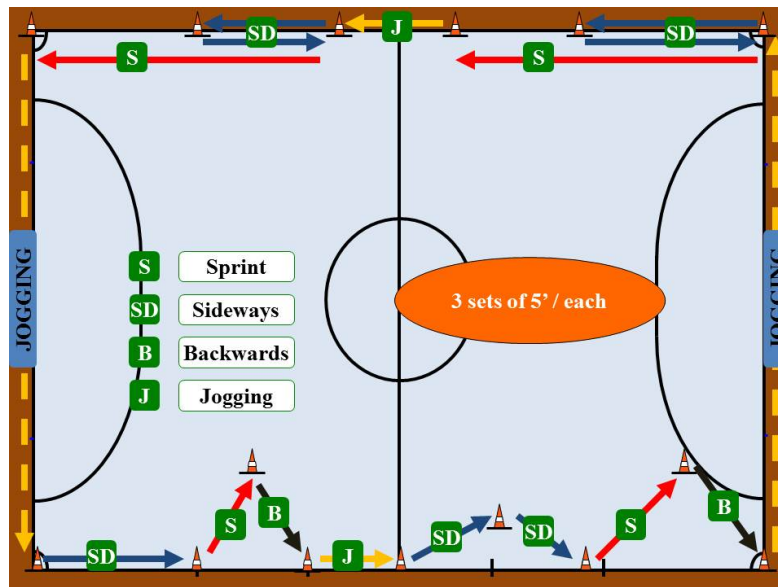
- 10m jogging into 10m sprint
- 10m side-stepping left into 20m sprint
- 10m side-stepping right into 30m all-out sprint
- 10m backwards running start into 40m all-out sprint

- Walk slowly back to the start between each sprint.

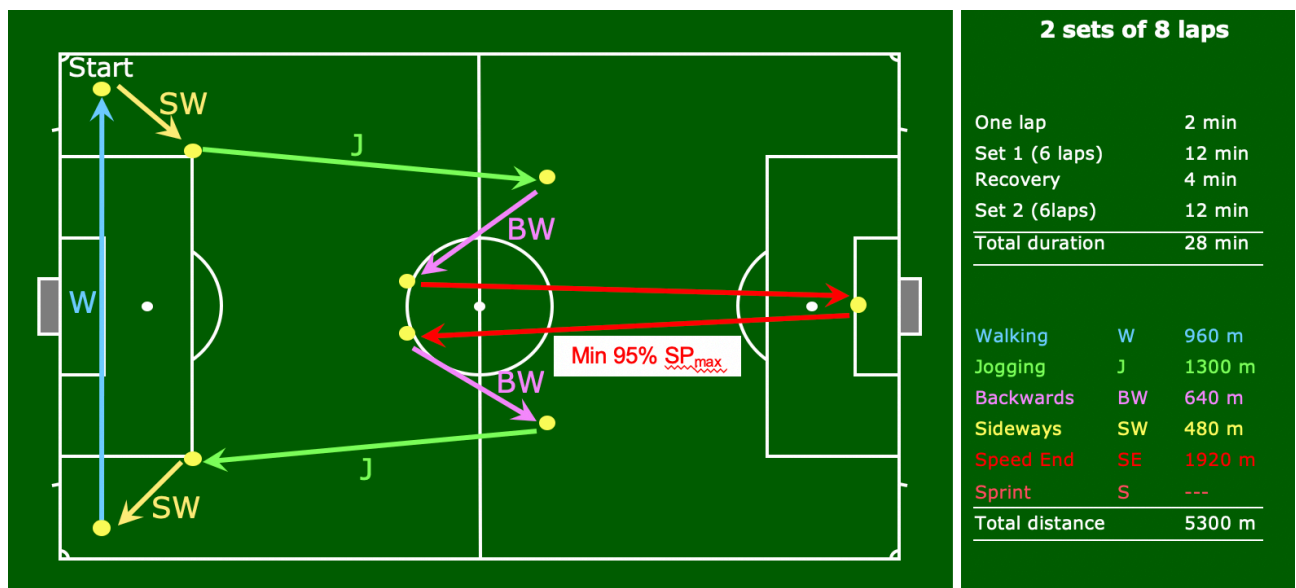
- All together 16 sprints and a total sprint distance of 400m.



* Agility for futsal - Futsal Referees could consider doing the following exercise:



- * Speed End.
 - Set 1: Run 6 laps as indicated in the picture.
 - 4' recovery
 - Set 2: Run again 6 laps of the same exercise.



- All together, this exercise takes 12' + 4' recovery + 12' = ± 28'.

- * Cool down
 - 5' jogging and walking, followed by 10' static stretching.

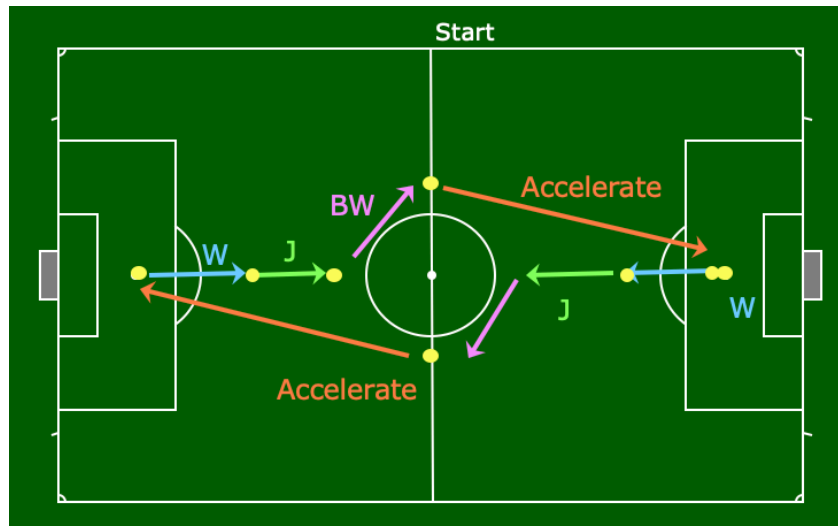
Total duration: 90'

Fri. 20th:

REST DAY

Sat. 21st.
Tr. 97

- * Warm up - 20' jogging, mobilisation and dynamic stretching.
- * Speed - Set 1: speed exercise in the length of the field, 4 x across the pitch and back to the starting position.



- 5' recovery
- Set 2: same exercise, again 4 x up and down.
- The total exercise time is 15'. The total sprint distance is 360 m.
- Optionally, 4-6 accelerations can be done along the wide diagonal line. (75 m in 15", 45" recovery)
- * Cool down - 5' jogging and walking, followed by 10' static stretching.

Total duration: 50'

Sun. 22nd. If you don't have a match appointment for the domestic league, use your free time for additional recovery, or to work on any fitness weaknesses you might have (e.g., aerobic endurance, strength, injury prevention,...).

Alternatively, you may also consider to do one of the match simulation sessions to compensate for not refereeing.

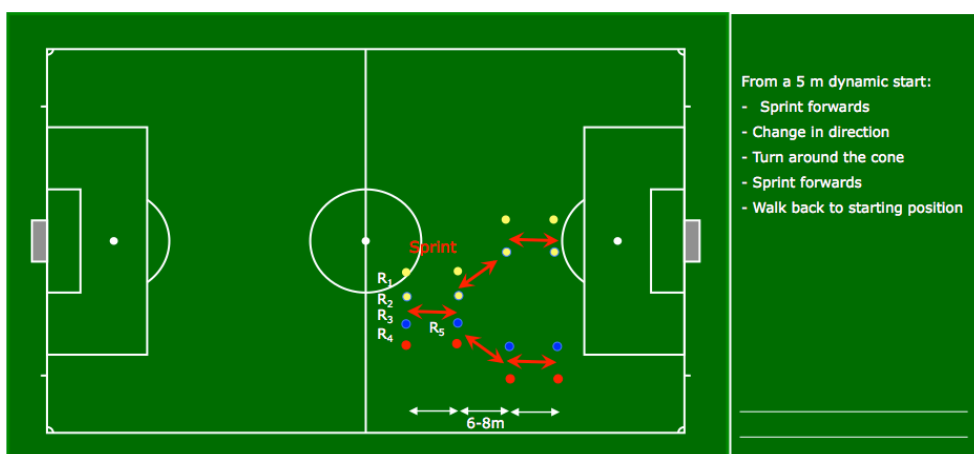
Other intermittent sports such as playing badminton, football, squash, or tennis are also an option, if you are used to these leisure activities.



Performance Training in Football Refereeing Weekly Training Plan

WEEK 48 from Monday 23rd to Sunday 29th of November Macrocycle V, week 2 (Training week 26)

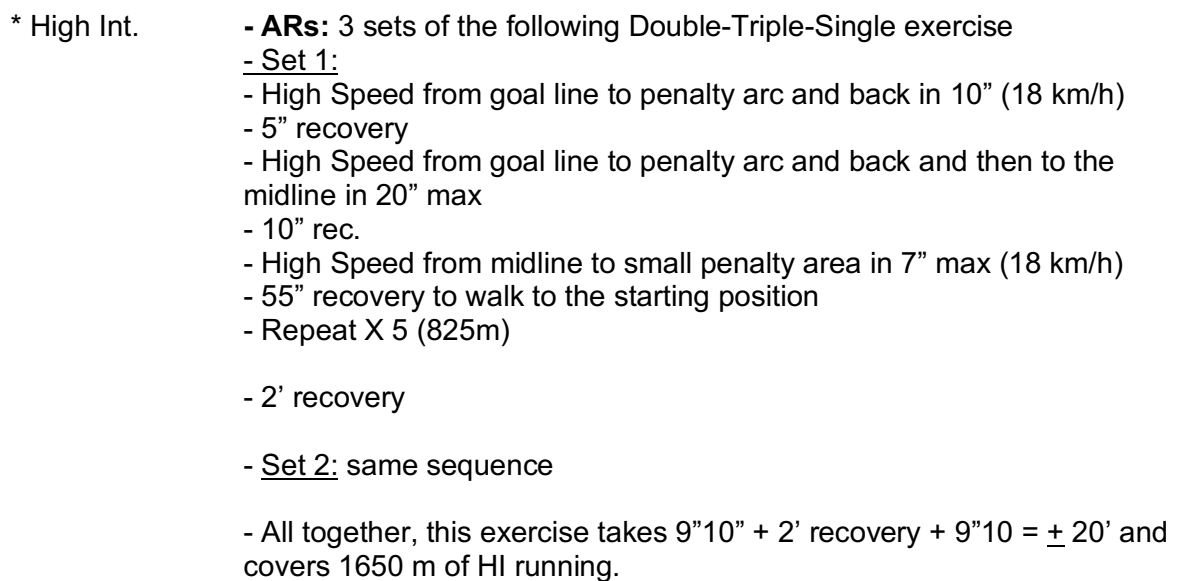
- Mon. 23rd: * Act. Rec. - 30' non-weight-bearing ex. (Cycle / Swim / X-Train) at 65-70% HR_{max}
Tr. 98 - 20' extensive stretching
- Sauna, Jacuzzi, Massage
- Tue. 24th: * Low Int. - 5' jogging slowly building up to 70% HR_{max} (\pm 1 km).
Tr. 99
- * Warm up - 20' jogging, mobilisation and dynamic stretching.
- * Strength - 15' core stability & injury prevention exercises.
- * Agility - 15' speed & agility exercises. Referees are organised in groups of 4.
- From a dynamic start, Referee 1 to 4 sprint to the first cone, change from direction, turn with fast feet around the next cone and finally sprint the last cone. They return walking.



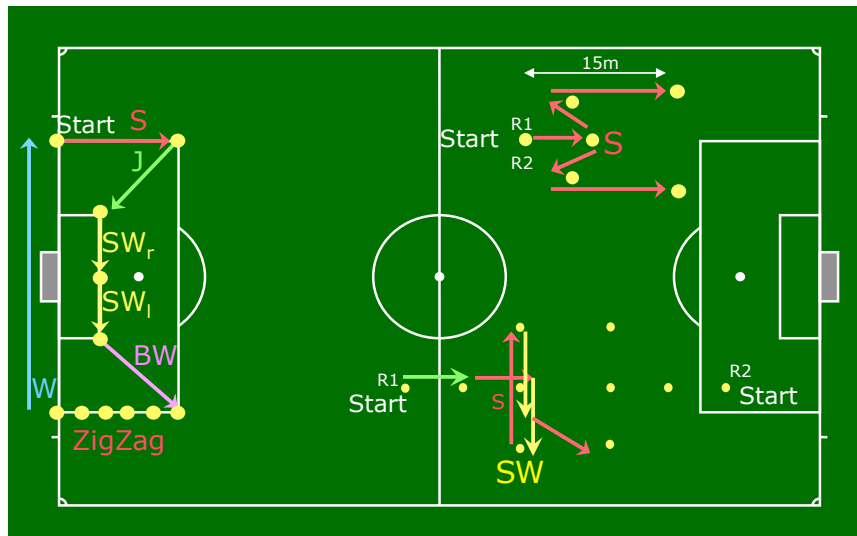
- * High Int. - **REFs:** 3 sets of the following Single-Double-Single exercise
- Set 1: Repeat 5 x (1075m), followed by 2 min recovery
 - Set 2: Repeat 5 x (1075m), followed by 2 min recovery
 - Set 3: Repeat 5 x (1075m)

This exercise takes 7'30" + 2' recovery + 7'30" + 2' recovery + 7'30" = 26'30" and covers 3.225m of HI running.

- Alternatively, the regular SDS is also an option: 3 sets of 5 reps.



<u>Wed. 25th</u>	* Strength	<ul style="list-style-type: none"> - 10' warm up on the bike / x-trainer / rower (70% HR_{max}) - individualised upper and lower body strength exercises
<u>Thu. 26th</u>	* Low Int.	- 5' jogging slowly building up to 70% HR _{max} (\pm 1 km).
Tr. 100	* Warm up	- 20' jogging, mobilisation and dynamic stretching.
	* Strength	- 15' core stability & injury prevention exercises.
	* Agility	- 15' of various agility exercises.



- Exercise 1: Sprint forward 5 m, cut back diagonally left/right, then turn and accelerate forwards 12 m.

- Exercise 2: 5 m jogging, 5m forward sprint, sidestep left 5 m, sprint forwards 10 m, sidestep right 5 m, sprint forward 10 m.

- Exercise 3: Sprint and agility exercises in the penalty area.

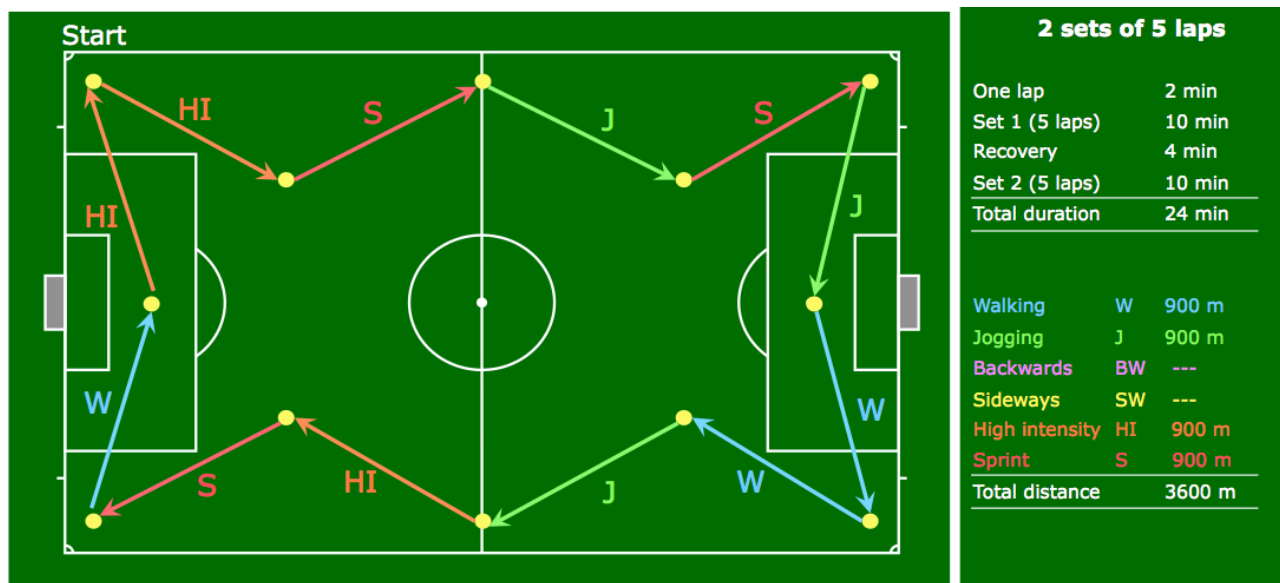
* Speed End. - Set 1: Field exercise, 5 laps of 2' each.
Ideally, this exercise should be done by trio (1 referee and 2 ARs).

During each lap, there are 12 activities. The colour of the next cone determines the intensity of the next activity as follows:

- walking (blue lines)
- jogging (green lines)
- high intensity tempo run (orange lines)
- sprinting (red lines)



Performance Training in Football Refereeing Weekly Training Plan



- 4' recovery

- Field exercise Set 2 (again 5 laps of 2' each).

- All together, this exercise takes 10' + 4' recovery + 10' = \pm 24'.

* Cool down

- 5' jogging and walking, followed by 10' static stretching.

Total duration: 94'

Fri. 27th:

REST DAY

Sat. 28th:

* Warm up

- 20' jogging, mobilisation and dynamic stretching.

Tr. 101

* Speed

- Straight line sprints from a dynamic starting position, such as heel lifts, knee lifts, walking, backwards or sideways running:

- Set 1: 5 x 10 m, starting from 10m walking

- Set 2: 4 x 15 m, starting from 10m side-stepping

- Set 3: 3 x 30 m, starting from 10m forwards jogging

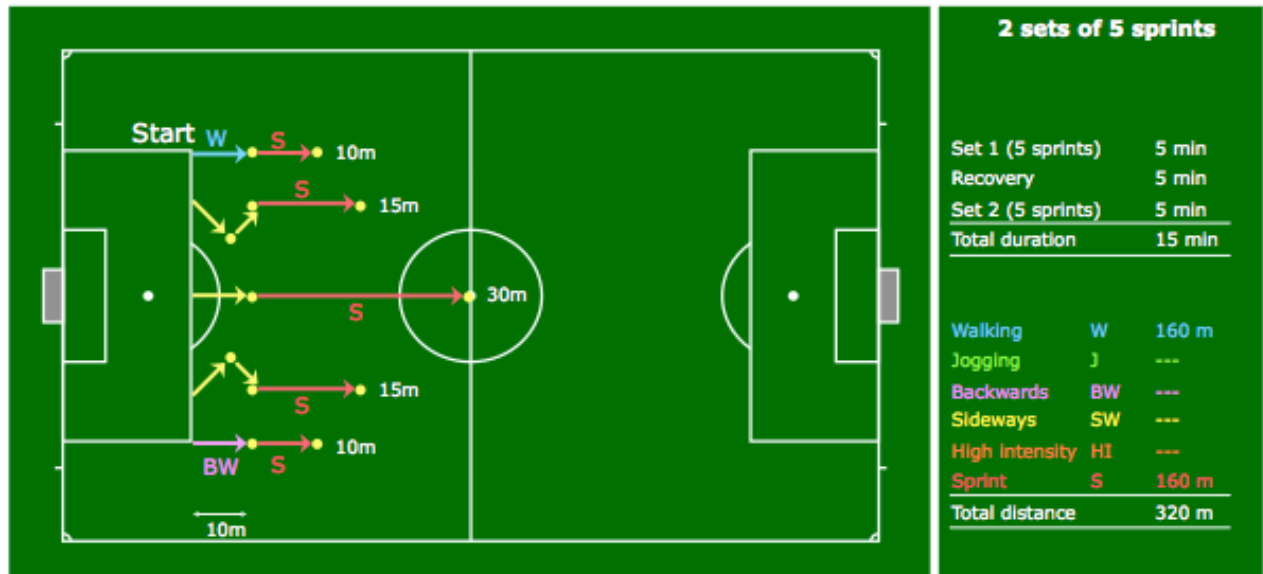
- Set 4: 4 x 15 m, starting from 10m side-stepping

- Set 5: 5 x 10 m, starting from 10m backwards jogging

- After every sprint, a very slow walk back to the start position is a good way of determining the recovery time (e.g. 20" for 10 m, 30" for 15 m, 40" for 30 m).



Performance Training in Football Refereeing Weekly Training Plan



- After every set, there is 1' recovery and stretching break.
- The total exercise time is 15'. The total sprint distance is 310 m.
- Optionally, 4-6 accelerations can be done along the wide diagonal line. (75 m in 15", 45" recovery)

* Cool down - 5' jogging and walking, followed by 10' static stretching.

Total duration: 50'

Sun. 29th: If you don't have a match appointment for the domestic league, use your free time for additional recovery, or to work on any fitness weaknesses you might have (e.g., aerobic endurance, strength, injury prevention,...).

Alternatively, you may also consider to do one of the match simulation sessions to compensate for not refereeing.

Other intermittent sports such as playing badminton, football, squash, or tennis are also an option, if you are used to these leisure activities.



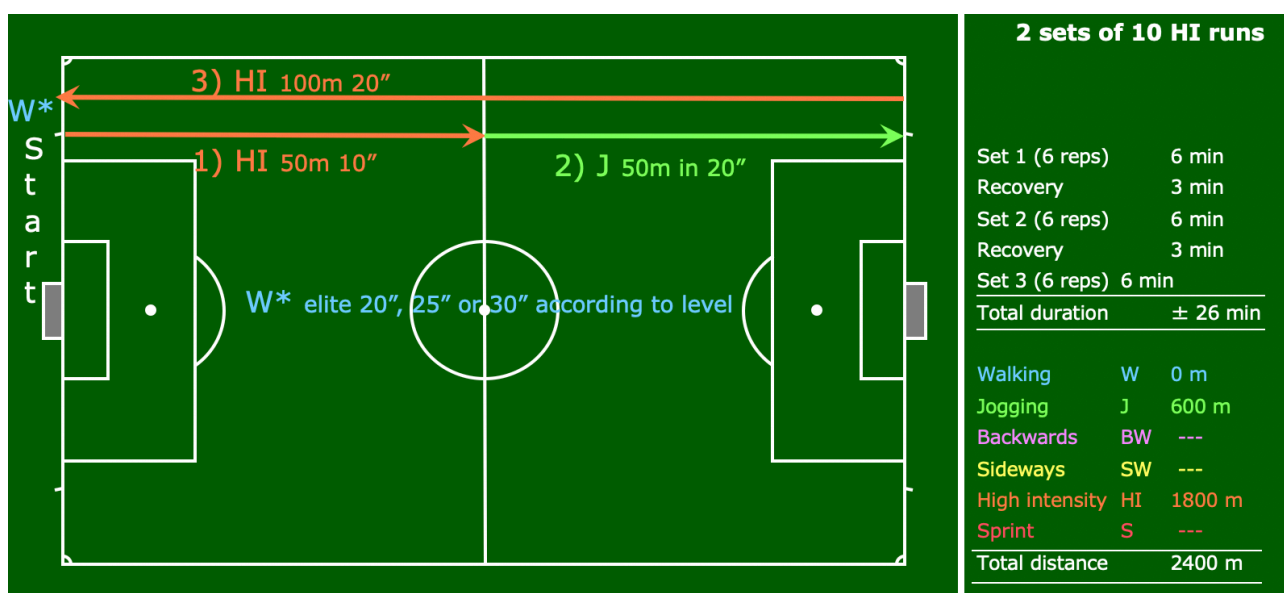
Performance Training in Football Refereeing

Weekly Training Plan

WEEK 49 from Monday 30th of November to Sunday 6th of December

Macrocycle V, week 3 (Training week 27)

<u>Mon. 30th.</u> Tr. 102	* Act. Rec.	<ul style="list-style-type: none"> - 30' non-weight-bearing ex. (Cycle / Swim / X-Train) at 65-70% HR_{max} - 20' extensive stretching - Sauna, Jacuzzi, Massage
<u>Tue. 1st.</u> Tr. 103	* Low Int.	- 5' jogging slowly building up to 70% HR _{max} (\pm 1 km).
	* Warm up	- 20' jogging, mobilisation and dynamic stretching.
	* Strength	- 15' core stability & injury prevention exercises.
	* Speed End.	* Speed End. - 1 set of the following exercise that takes \pm 8'. <ul style="list-style-type: none"> - 50 m sprint (\pm 10"), walking back 30", 5 x, 1' rest - 25 m sprint (\pm 5"), walking back 15", 5 x, 1' rest - 16 m sprint (\pm 3"), walking back 9", 5 x - 3' recovery
	* High Int.	- <u>Set 1:</u> Run from goal line to midline at high intensity in 10". Then, jog to the opposite goal line in 20". Continue from goal line to the opposite goal line in 20". Recovery time of only 10". 6 reps. - 3' recovery - <u>Set 2:</u> Again 6 reps. - 3' recovery - <u>Set 3:</u> Again 6 reps.





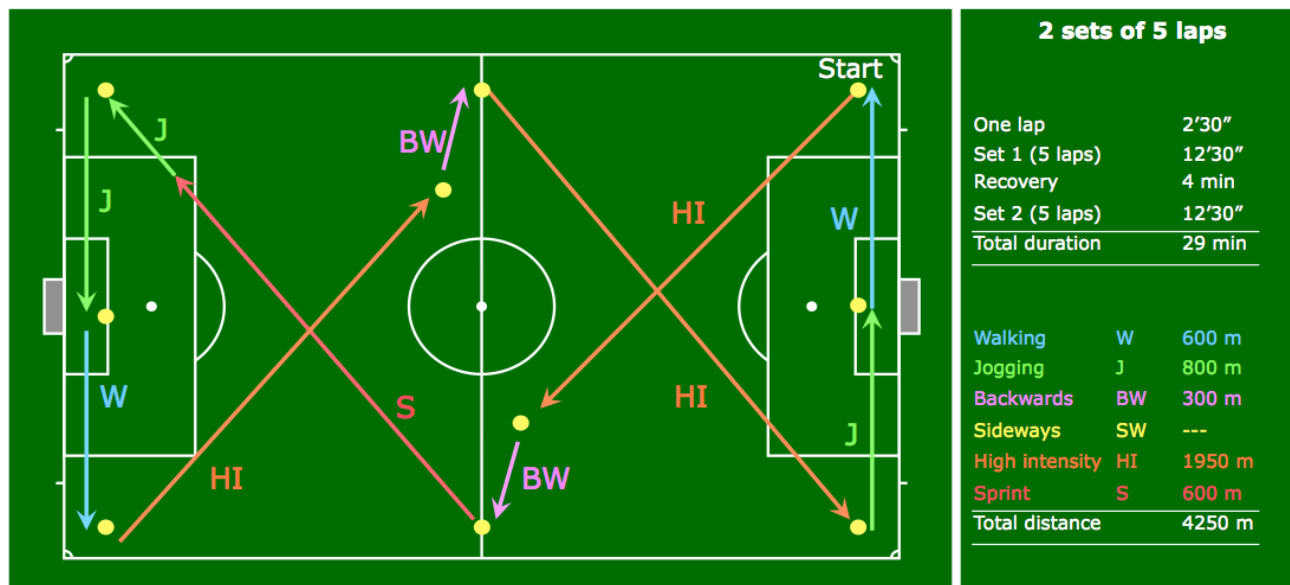
Performance Training in Football Refereeing Weekly Training Plan

* Cool down - 5' jogging and walking, followed by 10' static stretching.

Total duration: 89'

Wed. 2nd: * Strength - 10' warm up on the bike / x-trainer / rower (70% HR_{max})
- individualised upper and lower body strength exercises

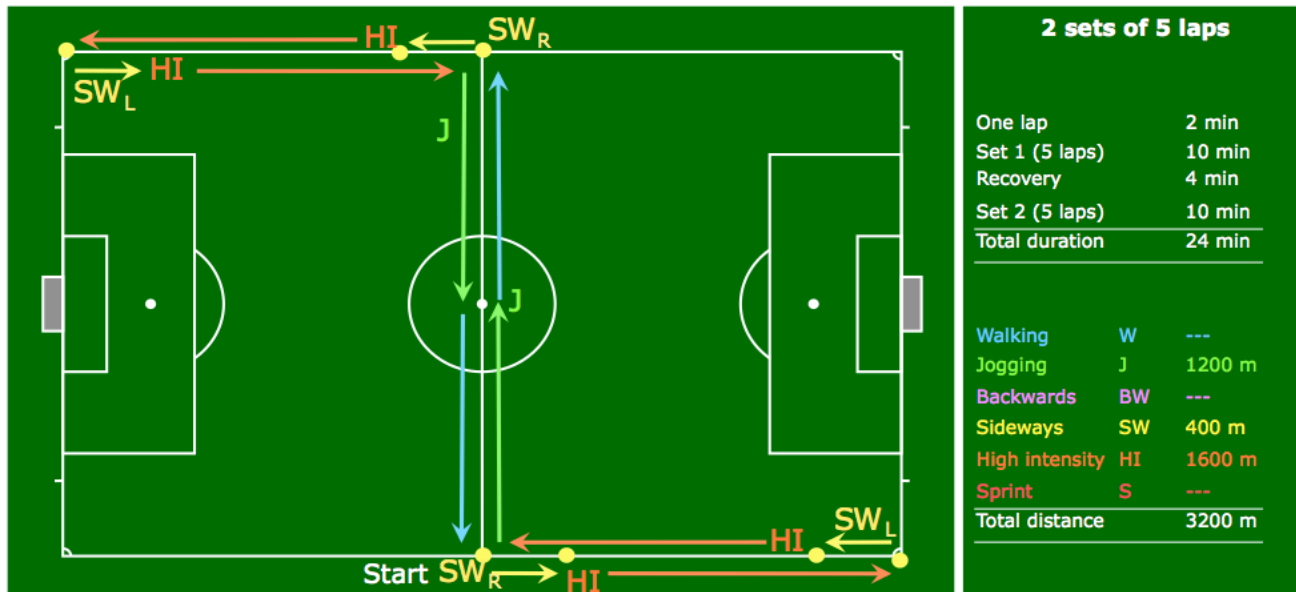
Thu. 3rd: * Low Int. - 5' jogging slowly building up to 70% HR_{max} (± 1 km).
Tr. 104
* Warm up - 20' jogging, mobilisation and dynamic stretching.
* Strength - 15' core stability & injury prevention exercises.
* Speed End. - Set 1: 'Referee Run': 5 laps ($\pm 2'30''$, $\pm 12'30''$ in total).
- 4' recovery
- Set 2: 'Referee Run': again 5 laps that will take $\pm 12'30''$.
- All together, this exercise takes $12'30'' + 4' \text{ rec} + 12'30'' = 29'$.



* SE for ARs - While the referees perform their 2 sets of the HI exercise, the next SE exercise can be considered for the assistant referees.



Performance Training in Football Refereeing Weekly Training Plan



* Cool down - 5' jogging and walking, followed by 10' static stretching.

Total duration: 84'

Fri. 4th:

REST DAY

Sat. 5th:

Tr. 105

* Warm up

- 20' jogging, mobilisation and dynamic stretching.

* Speed/Agility

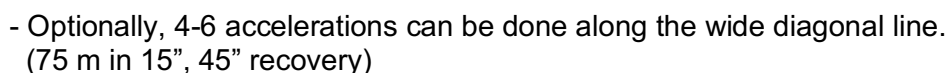
- Set 1: (1) Sprint for 10m, then walk for 30m. (2) Sprint for 20m, then walk for 20m. (3) Sprint for 30m, then walk for 10m. (4) Sprint for 40m.

- 2' recovery

- Set 2: Now start first with 40m and then work down to 10m.

- 2' recovery

- Set 3: Repeat Set 1



Total duration: 50'

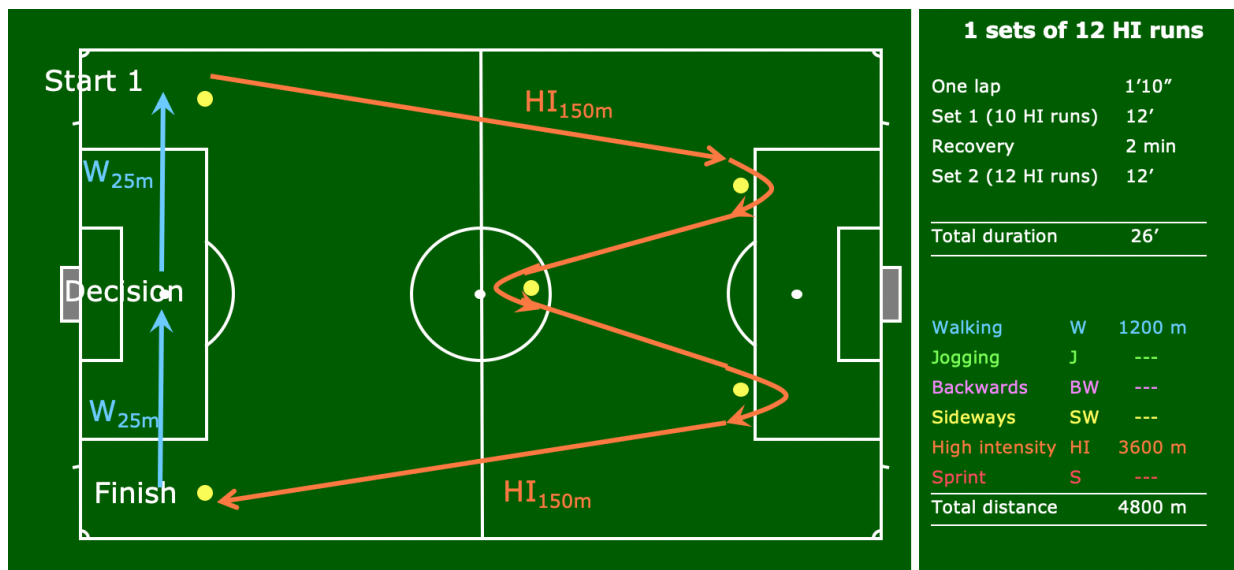
Alternatively, you may also consider to do one of the match simulation sessions to compensate for not refereeing.

Other intermittent sports such as playing badminton, football, squash, or tennis are also an option, if you are used to these leisure activities.



Tue. 8th:
Tr. 107

- * Low Int. - 5' jogging slowly building up to 70% HR_{max} (\pm 1 km).
- * Warm up - 20' jogging, mobilisation and dynamic stretching.
- * Strength - 15' core stability & injury prevention exercises.
- * High Int. - Set 1:
From the start, run at high intensity to the other side of the pitch, turn around the cone and return at high intensity (150 m with 3 turns in 35 sec) as indicated in the picture, afterwards walk back to the start (50 m in 35 sec) and repeat 10 to 12 times.
- 2' recovery
- Set 2: Same as set 1, however, run in the other direction.
- Decision making: At the end of each HI run, referees run 150 m (2 x 75 have to take a technical and disciplinary decision using video clips.



Total duration: 79'

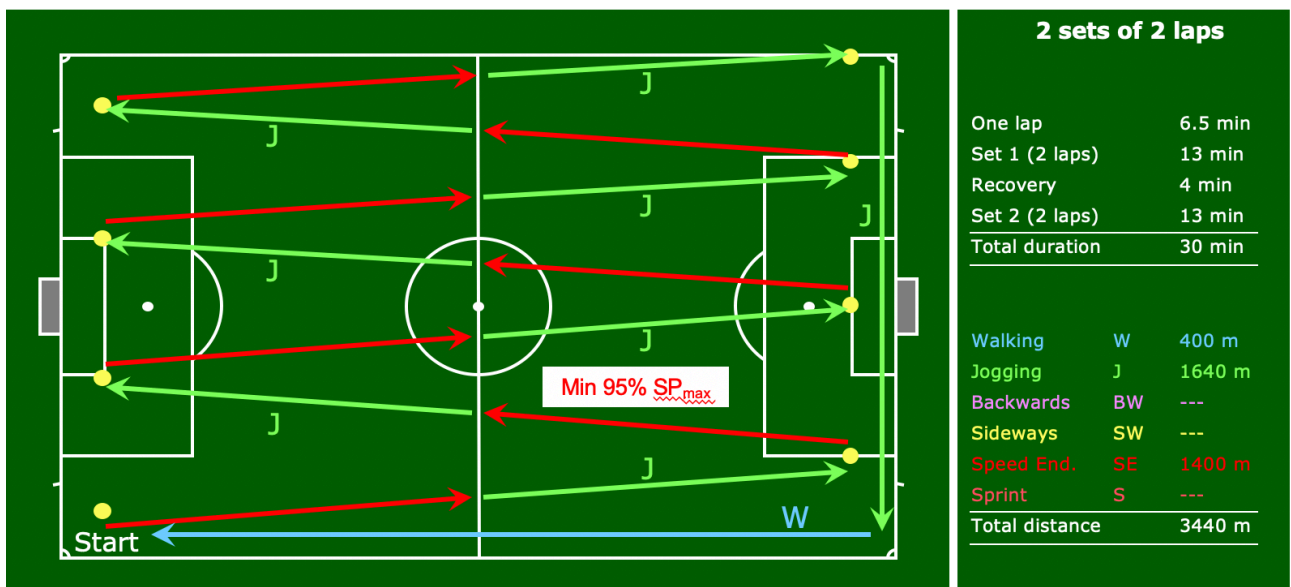
Wed. 9th: * Strength

- 10' warm up on the bike / x-trainer / rower (70% HR_{max})
- individualised upper and lower body strength exercises



Performance Training in Football Refereeing Weekly Training Plan

- Thu. 10th:**
Tr. 108
- * Low Int. - 5' jogging slowly building up to 70% HR_{max} (\pm 1 km).
 - * Warm up - 20' jogging, mobilisation and dynamic stretching.
 - * Strength - 15' core stability & injury prevention exercises.
 - * Speed End.
 - Set 1: One lap consists of 7 sub-maximal sprints followed by 7 recovery jogs. The tempo running should consist of 90% of maximal speed. The jogging should take 3x longer than the duration of the tempo run. After reaching the finish, referees jog along the goal line until the next corner and then walk back to the starting position.
 - 3' recovery
 - Set 2: Again 2 laps of the same exercise.
 - All together these exercises take 30' (13' Set 1, 4' recovery, 13' Set 2).



- * Cool down - 5' jogging and walking, followed by 10' static stretching.

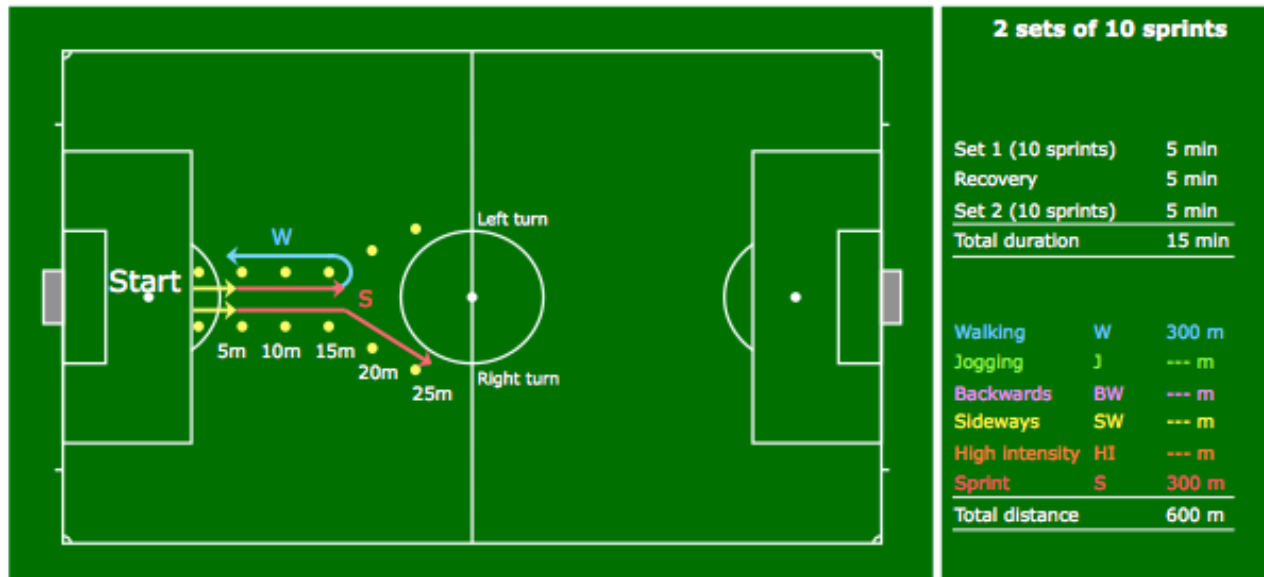
Total duration: 85'

Fri. 11th: REST DAY

- Sat. 12th:**
Tr. 109
- * Warm up - 20' jogging, mobilisation and dynamic stretching.
 - * Speed
 - short sprints from a dynamic position (heel lifts, knee lifts,...)
 - Set 1 (right turn):
(2 x 5 m) - (2 x 10 m) - (2 x 15 m) - (2 x 20 m) - (2 x 25 m)
 - 5' recovery

- Set 2 (left turn):

(2 x 5 m) - (2 x 10 m) - (2 x 15 m) - (2 x 20 m) - (2 x 25 m)



- In total, this exercise takes 15'. The total sprint distance is 300 m.

- Optionally, 4-6 accelerations can be done along the wide diagonal line. (75 m in 15", 45" recovery)

* Cool down - 5' jogging and walking, followed by 10' static stretching.

Total duration: 50'

Sun. 13th: If you don't have a match appointment for the domestic league, use your free time for additional recovery, or to work on any fitness weaknesses you might have (e.g., aerobic endurance, strength, injury prevention,...).

Alternatively, you may also consider to do one of the match simulation sessions to compensate for not refereeing.

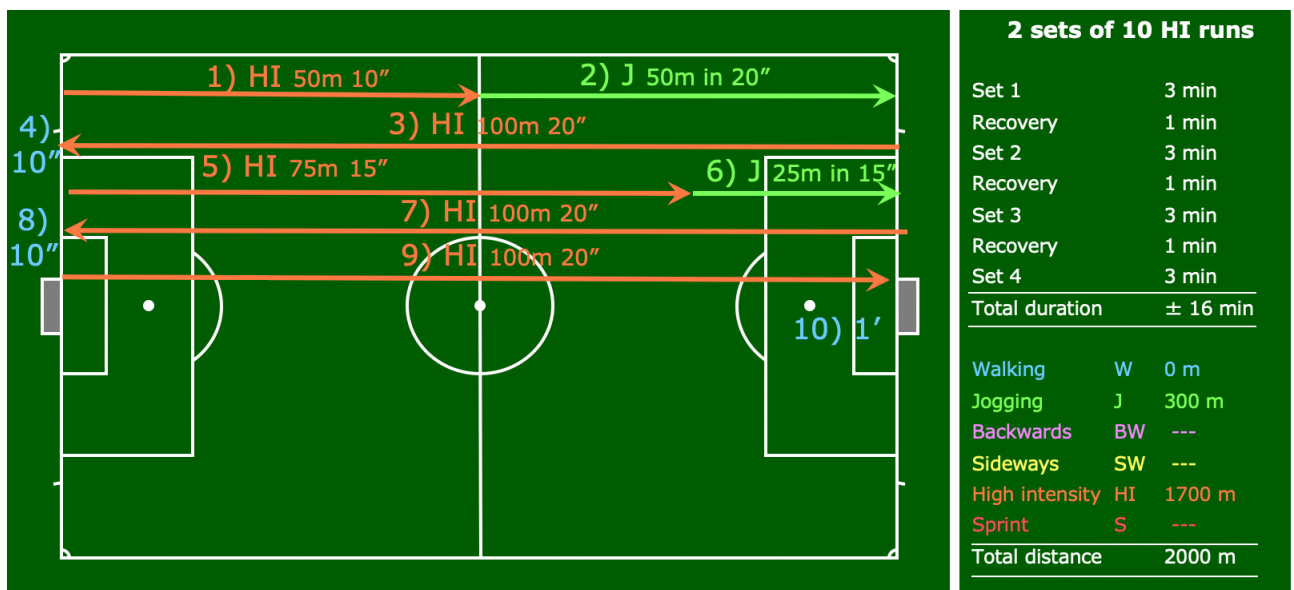
Other intermittent sports such as playing badminton, football, squash, or tennis are also an option, if you are used to these leisure activities.



Performance Training in Football Refereeing Weekly Training Plan

WEEK 51 from Monday 14th to Sunday 20th of December Macrocycle V, week 5 (Training week 29)

- Mon. 14th: * Act. Rec. - 30' non-weight-bearing ex. (Cycle / Swim / X-Train) at 65-70% HR_{max}
Tr. 110 - 20' extensive stretching
- Sauna, Jacuzzi, Massage
- Tue. 15th: * Low Int. - 5' jogging slowly building up to 70% HR_{max} (\pm 1 km).
Tr. 111
- * Warm up - 20' jogging, mobilisation and dynamic stretching.
- * Strength - 15' core stability & injury prevention exercises.
- * High Int. - Set 1: 1) Run from goal line to midline at high speed in 10". 2) jog to the opposite goal line in 20". 3) Run from goal line to goal line at high speed in 20". 4) 10" recovery. 5) Run from goal line to the opposite penalty arc in 15". 6) jog to the goal line in 25". 7) Run from goal line to goal line at high speed in 20". 8) 10" recovery. 9) Run from goal line to goal line at high speed in 20". 10) 1' recovery.
- 1' recovery
- Set 2-3-4: same procedure, 4 sets in total, approximately 16 min



- * Cool down - 5' jogging and walking, followed by 10' static stretching.

Total duration: 75'

- Wed. 16th: * Strength - 10' warm up on the bike / x-trainer / rower (70% HR_{max})
- individualised upper and lower body strength exercises

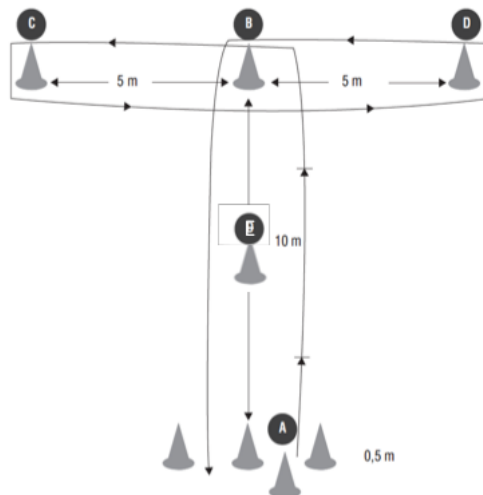
- Thu. 17th: * Low Int. - 5' jogging slowly building up to 70% HR_{max} (\pm 1 km).
Tr. 112

- * Warm up - 20' jogging, mobilisation and dynamic stretching.
- * Strength - 15' core stability & injury prevention exercises.
- * Agility - 'T'- drill for Referees:

- Set 1: Referees sprint forwards as indicated in the figure: 10 m straight forwards from cone A to cone B, turn around cone B, continue sprinting forwards to cone C, turn around cone C, continue sprinting forwards to cone D, turn around cone D, continue sprinting forwards to cone B, turn around cone B and continue sprinting through the finish. Reference time is 9.8".

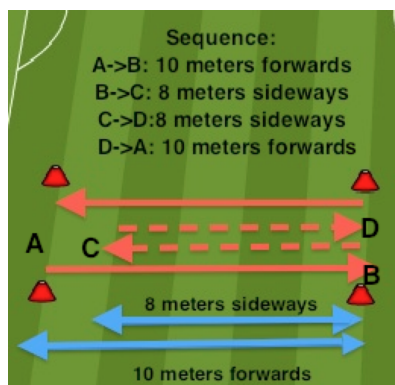
- 1' recovery, 3 reps.

- Set 2: Again 3 reps with 1' recovery in between, but Referees now start on the left side instead of the right side.



- ARs do 4 reps of the CODA exercise:

- Sprint 10 m (one foot lined up 0.5 m in front of cone A) from cone A to B, then sideways left 8 m from cone B to C, the sideways right 8 m from cone C to D, sprint back to the finish line.
- The reference time is 9.8": 4 reps in total (2 x starting sideways running with the L leg & 2 x starting R leg)



- 3' recovery

- * Speed End. - 'Diagonal Run' exercise, 6 laps of 1'15" or 12 accelerations each:
 - 90% SP_{max} along the diagonal line, jogging along the penalty area, 90% SP_{max} along the diagonal line, jogging along the penalty area.

2 sets of 6 laps

One lap	1'15"
Set 1 (6 laps)	7.5 min
Recovery	4 min
Set 2 (6 laps)	7.5 min
Total duration	19 min

Walking	W	---
Jogging	J	960 m
Backwards	BW	---
Sideways	SW	---
Speed End	SE	2040 m
Sprint	S	---
Total distance		3000 m

- 4' recovery

- All together these exercises take 22' (6' exercise 1, 3' recovery, 7'5 exercise 2, 4' recovery).

- * Cool down - 5' jogging and walking, followed by 10' static stretching.

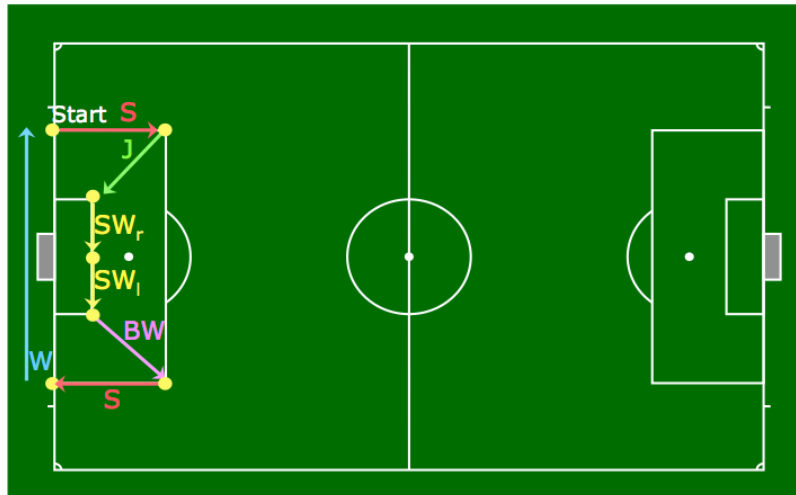
Total duration: 92'

Fri. 18th:

REST DAY

Sat. 19th:
 Tr. 113

- * Warm up - 20' jogging, mobilisation and dynamic stretching.
- * Speed - Set 1: Perform 5 laps of the next exercise in the penalty area.



- Once the 5 laps (or 10 sprints of 16m) have been completed, take a 5' recovery, stretching and drinking break.
- Then perform another 5 laps.
- The total exercise time is 15'. The total sprint distance is 320m.
- Optionally, 4-6 accelerations can be done along the wide diagonal line. (75 m in 15", 45" recovery)

* Cool down - 5' jogging and walking, followed by 10' static stretching.

Total duration: 50'

Sun. 20th: If you don't have a match appointment for the domestic league, use your free time for additional recovery, or to work on any fitness weaknesses you might have (e.g., aerobic endurance, strength, injury prevention,...).

Alternatively, you may also consider to do one of the match simulation sessions to compensate for not refereeing.

Other intermittent sports such as playing badminton, football, squash, or tennis are also an option, if you are used to these leisure activities.



Performance Training in Football Refereeing Weekly Training Plan

WEEK 52 from Monday 21st to Sunday 27th of December **Macrocycle V, week 6 (Training week 30)**

For the week between Christmas and New Year, there will be a winter break in a number of European countries. Therefore, a training programme will not be provided. Just listen to your own body. If you require a few days of rest, then take a break and enjoy your days with your family and friends. If you are willing to practice, then the goal is to practice this last week of the year at 80% HR_{max}, i.e. on Monday (Tr. 114), and Saturday \pm 40 min (Tr. 116).

The medium intensity training session on Wednesday is more intermittent. For every 5' of running, 2 tempo runs have to be done: in the middle a 50 m tempo run, and towards the end of the 5' period a 100 m tempo run has to be covered. Over the total 50' run, 20 accelerations have to be done, i.e. 10 of 50 m and 10 of 100 m.

From the first week of January on, the training sessions will be designed over the next 6 weeks in a progressive way in such a way that the referees will be top-fit for the second half of the competitive season in the domestic leagues and the European competitions in February.

MERRY CHRISTMAS AND A HEALTHY, HAPPY AND PROSPEROUS NEW YEAR!

TAKE CARE OF YOURSELF AND THOSE YOU HOLD DEAR!